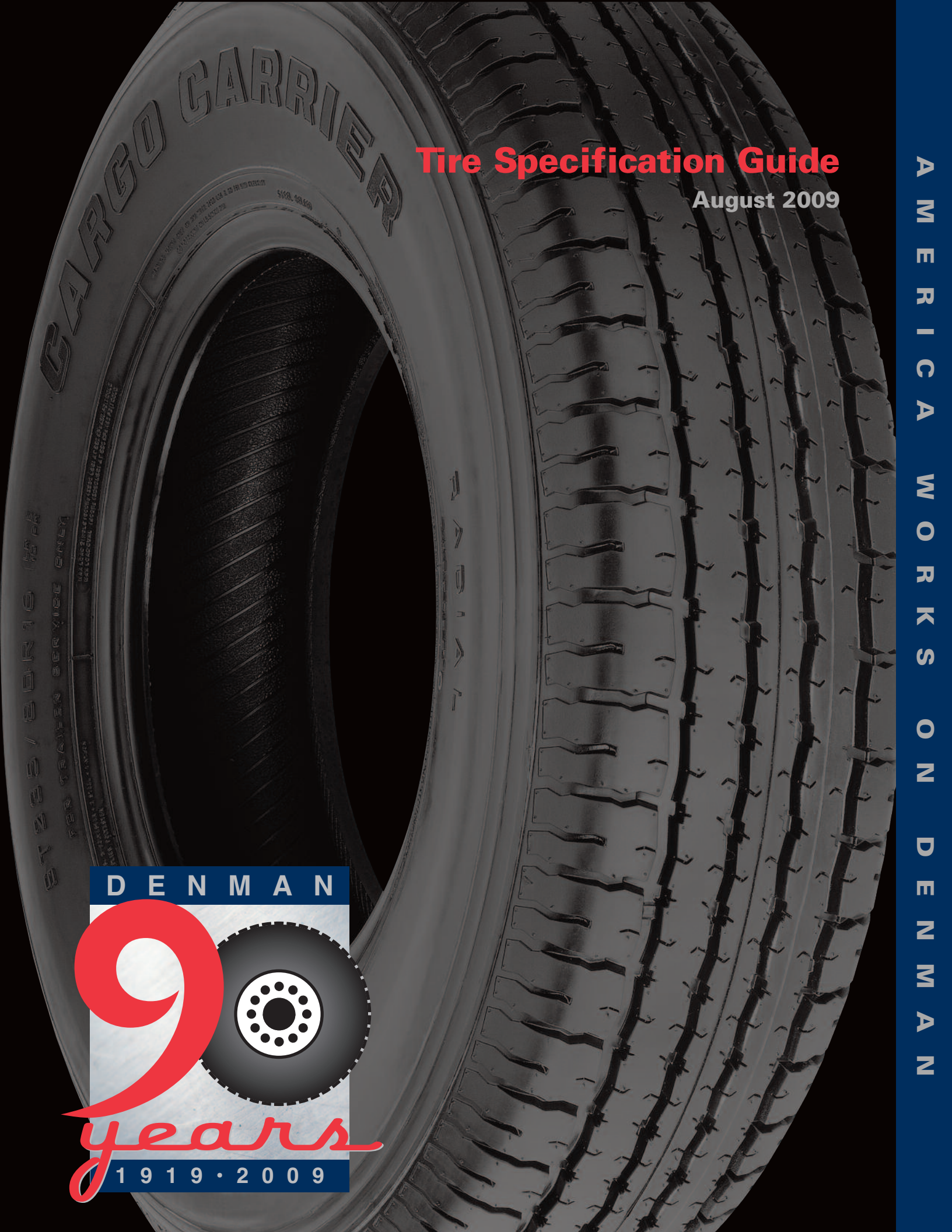


Tire Specification Guide

August 2009

A M E R I C A W O R K S O N D E N M A N



D E N M A N



years
1919 • 2009

Denman

TIRE CORPORATION

A M E R I C A W O R K S O N D E N M A N™

OFF HIGHWAY WORK TIRES



1500 HOURS WARRANTY
Premium Radial Skid Trax
 Heavy Duty Sidewall with Rim Guard
 Tubeless - Nylon - Steel with Nylon Overlays



1000 HOURS WARRANTY
Premium Skid Trax
 Heavy Duty Sidewall with Rim Guard
 Tubeless - Nylon



600 HOURS WARRANTY 'B' ONLY
Skid Steer Plus
 Heavy Duty Sidewall with Rim Guard
 Tubeless - Nylon



X-Treme Hard Trax
 Heavy Duty Sidewall with Rim Guard
 Tubeless - Nylon



Skid Steer Loader
 Tubeless - Nylon



Ultra Skid
 Heavy Duty Sidewall with Rim Guard
 Tubeless - Nylon



Super Backhoe II (F-3)
 Tubeless - Nylon



Industrial Tractor (R-4)
 Tubeless - Nylon



Industrial Tractor (R-3)
 Tubeless - Nylon



Road Grader (E-2/G-2)
 Tubeless - Nylon



Earthmover Traction (E-2/G-2/L-2)
 Tubeless and Nylon



RM 823/826 (E-3/L-3)
 Tubeless and Tube Type - Nylon



Denman Radial (E-3/L-3)
 Tubeless - Steel



Mine King II
 Tubeless and Tube Type - Nylon



Industrial Lug (Forklift)
 Tube Type - Nylon



Lift Trax (Forklift)
 Tube Type - Nylon



Smooth Compactor (C-1)
 Tubeless and Tube Type - Nylon



Omni Trax
 Tubeless - Nylon



Turf Hugger
 Tubeless - Nylon



Ditch Digger
 Tubeless - Nylon

CUSTOMER FOCUS, DRIVE FOR INNOVATION, AND COMMITMENT TO EXCEPTIONAL QUALITY ENABLE US TO PROVIDE THE BEST INDUSTRIAL/SPECIALTY TIRE VALUE. DENMAN TIRE, A PRIVATELY HELD AMERICAN COMPANY SINCE 1919.

AGRICULTURAL TIRES



Farm Hand A/P Tractor (R-1)
 Tubeless - Nylon



Farm Hand A/P Tractor (R-1)
 Tube Type - Nylon



Farm Hand Front Tractor (3-Rib F-2)
 Tubeless and Tube Type - Nylon



Farm Hand Front Tractor (4-Rib F-2)
 Tubeless and Tube Type - Nylon



Farm Hand Implement (I-1)
 Tubeless and Tube Type - Nylon

ON HIGHWAY CONSUMER TIRES



Denman Classic IV
 Tubeless - Polyester



Denman Coyote (Light Truck)
 Tubeless - Polyester - Steel Belted Radial



Denman Express (S/T Bias)
 Tubeless - Nylon



Denman Express (S/T Bias)
 Tubeless - Nylon



Denman Cargo Carrier
 Tubeless - Steel Belted

ON HIGHWAY COMMERCIAL TIRES



Denman Express (Medium/Heavy Bias Truck)
 Tubeless and Tube Type - Nylon



Denman Express (Medium/Heavy Bias Truck)
 Tubeless and Tube Type - Nylon



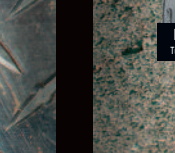
Denman Premium Low Boy (LPT)
 Tubeless and Tube Type - Nylon



Denman Premium Low Boy (LPT)
 Tubeless and Tube Type - Nylon



Military Design (NDT)
 Tubeless - Nylon



Denman Express (Commercial Light Truck)
 Tubeless and Tube Type - Nylon



Denman Jumbo Trak (ML)
 Tubeless - Nylon



Denman Ground Hawg (ML)
 Tubeless - Nylon



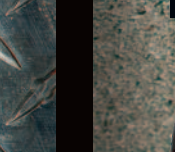
Denman Express (Commercial Light Truck)
 Tubeless and Tube Type - Nylon



Denman Express (Commercial Light Truck)
 Tubeless and Tube Type - Nylon



Denman Express (Commercial Light Truck)
 Tubeless and Tube Type - Nylon



Denman Express (Commercial Light Truck)
 Tubeless and Tube Type - Nylon

Contents

OFF HIGHWAY WORK TIRES

Premium Radial Skid Trax	1
Premium Skid Trax	1
X-Treme Hard Trax	1
Skid Steer Plus	2
Skid Steer Loader	2
Ultra Skid	3
Industrial Tractor (R-3)	3
Super Backhoe II (F-3)	4
Industrial Tractor (R-4)	4
Road Grader (E-2/G-2)	5
Earthmover Traction (E-2/G-2/L-2)	5
RM 826 (L-3)	6
RM 826 (E-3/L-3)	6
Denman Radial (E-3/L-3)	7
Mine King II	7
Industrial Lug (Forklift)	8
Smooth Compactor (C-1)	9
Omni Trax	9
Turf Hugger	9
Ditch Digger	10

AGRICULTURAL TIRES

Farm Hand A/P Tractor (R-1)	10, 11
Farm Hand Irrigation (R-1)	11
Farm Hand Front Tractor (3-Rib F-2)	12
Farm Hand Front Tractor (4-Rib F-2)	12
Farm Hand Implement (I-1)	13
Farm Hand Highway Service (F-1)	13

ON HIGHWAY COMMERCIAL TIRES

Denman Express (M/H Bias Truck)	14
Denman Premium Low Boy (LPT)	15
Military Design (NDT)	15
Denman Jumbo Trak (ML)	16
Denman Ground Hawg (ML)	16
Denman Express (Commercial Light Truck)	17

ON HIGHWAY CONSUMER TIRES

Denman Classic IV (Classic Passenger)	18
Denman Columbia Deluxe (Classic Passenger)	18
Denman Coyote (Light Truck)	18
Denman Express (S/T Bias)	19
Denman Cargo Carrier	19

PRODUCT SUPPORT

Special Production Run Items	20
Light Truck Rim Fitment	21
Warranty	22
Tire Return Procedure	23
Return Goods Report	24
Skid Steer Warranty Response Sheet	25
Notes	26, 27

All tire measurement data – inflated

Order Online 24/7 ibuydenman.com

A M E R I C A W O R K S O N D E N M A N





Premium Radial Skid Trax

Heavy Duty Sidewall with Rim Guard
Tubeless – Nylon–Steel with Nylon Overlays



SIZE	PLY	SERVICE INDEX	CODE	SKID DEPTH	TREAD WIDTH	O.D.	C.S.	RIM	5 m.p.h.		10 m.p.h.		WT.
									MAX. INFL.	MAX. LOAD	MAX. INFL.	MAX. LOAD	
10R16.5	8	128A5	RSK-40R	25/32	8.7	30.4	10.8	8.25 x 16.5	65	3970	65	3085	74
12R16.5	10	141A5	RSK-50R	30/32	10.1	32.9	13.0	9.75 x 16.5	70	5678	70	4410	90

- **The Best Skid Steer tire in the Marketplace – Backed by a 1,500 HOUR WARRANTY**
- Utilizes one of the Hardest most Chip Resistant Compounds Ensuring Long Wear under Extreme Severe Duty Applications
- Steel Reinforcement provides Unparalleled Puncture Resistance
- All-Purpose Tread Design designed to deliver Exceptional Traction in all Applications



Premium Skid Trax

Heavy Duty Sidewall with Rim Guard
Tubeless – Nylon



SIZE	PLY	CODE	SKID DEPTH	TREAD WIDTH	O.D.	C.S.	RIM	5 m.p.h.		10 m.p.h.		WT.
								MAX. INFL.	MAX. LOAD	MAX. INFL.	MAX. LOAD	
10-16.5	10	SKD-30	37/32	9.5	31.3	11.0	8.25 x 16.5	75	4720	75	3730	78
12-16.5	12	SKD-32	40/32	11.3	32.9	12.8	9.75 x 16.5	80	6320	80	4990	108

- **The Best Bias Skid Steer tire in the Marketplace – Backed by a 1,000 HOUR WARRANTY**
- Ultra Deep Tread provides Exceptional Wear in Extreme Hard Surface Applications
- Directional Tread Design makes tire a Performer in the Dirt



X-Treme Hard Trax

Heavy Duty Sidewall with Rim Guard
Tubeless – Nylon

SIZE	PLY	CODE	SKID DEPTH	TREAD WIDTH	O.D.	C.S.	RIM	5 m.p.h.		10 m.p.h.		WT.
								MAX. INFL.	MAX. LOAD	MAX. INFL.	MAX. LOAD	
10-16.5	12	SKD-94	30/32	9.5	31.9	10.5	8.25 x 16.5	90	5240	90	4140	75
12-16.5	14	SKD-96	35/32	10.5	33.6	12.4	9.75 x 16.5	90	6780	90	5356	90

- **Non-Directional Tread Designed for Multi Purpose Usage on Skid Steer, Backhoe, and Aerial Lifts**
- Low Rubber to Void Ratio provides Extended Wear in Hard Surface Applications
- Heavy Duty Construction along with Extra Heavy Duty Sidewall Ensures Durability under Extreme Severe Duty Applications





600 HOURS WARRANTY
DESIGN "B" ONLY

Skid Steer Plus

Heavy Duty Sidewall with Rim Guard
Tubeless – Nylon

SIZE	PLY	CODE	SKID DEPTH	TREAD WIDTH	O.D.	C.S.	RIM	5 m.p.h.		10 m.p.h.		WT.	DESIGN
								MAX. INFL.	MAX. LOAD	MAX. INFL.	MAX. LOAD		
10-16.5	8	SKD-15	21/32	9.5	30.4	10.3	8.25 x 16.5	60	4140	55	3270	49	B
12-16.5	10	SKD-16	21/32	10.5	31.9	12.6	9.75 x 16.5	65	5600	65	4425	67	B
10-16.5	10	SKD-22	21/32	9.5	30.4	10.3	8.25 x 16.5	75	4720	75	3730	51	B
12-16.5	12	SKD-23	21/32	10.5	31.9	12.6	9.75 x 16.5	80	6320	80	4990	69	B
14-17.5	10	SKD-13	25/32	11.5	36.6	14.2	10.5 x 17.5	55	6580	55	5410	94	A
14-17.5	14	SKD-14	25/32	11.5	36.6	14.2	10.5 x 17.5	80	8540	80	6747	109	A
15-19.5	8	SKD-24	26/32	13.5	40.4	15.9	11.75 x 19.5	40	7250	40	5727	144	A
15-19.5	12	SKD-25	26/32	13.5	40.4	15.9	11.75 x 19.5	60	9190	60	7260	157	A
15-19.5	14	SKD-26	26/32	13.5	40.4	15.9	11.75 x 19.5	70	10060	70	7947	162	A
31 x 15.50-15	8	SKD-33	24/32	12.6	31.9	15.4	13 x 15	45	4361	45	3643	72	A
33 x 15.50-16.5	12	SKD-35	26/32	12.5	33.2	15.1	12 x 16.5	60	6835	60	5710	87	A

- Long Wear Performance Backed by a 600 HOUR WARRANTY on SKD15/SKD22 10-16.5 and SKD16/SKD23 12-16.5
- Directional Tread Design with Large Rubber to Void Ratio provides Maximum Traction in Soft Soil Environments
- Extra Heavy Duty Sidewall Prevents Rim Damage and Improves Durability



Skid Steer Loader

Tubeless – Nylon

SIZE	PLY	CODE	SKID DEPTH	TREAD WIDTH	O.D.	C.S.	RIM	5 m.p.h.		10 m.p.h.		WT.
								MAX. INFL.	MAX. LOAD	MAX. INFL.	MAX. LOAD	
10-16.5	6	SKD-04	21/32	9.5	30.4	10.3	8.25 x 16.5	45	3500	45	2765	45
12-16.5	8	SKD-05	21/32	10.5	32.4	12.2	9.75 x 16.5	50	4810	50	3800	60
23 x 8.50-12	4	SKD-01	15/32	7.1	22.8	8.2	7 x 12	35	1470	35	1160	19
23 x 8.50-12	8	SKD-20	15/32	7.1	22.8	8.2	7 x 12	65	2105	65	1663	22
23 x 10.50-12	8	SKD-36	15/32	9.1	22.8	10.2	8.5 x 12	50	2130	50	1680	26
25 x 8.50-14	6	SKD-34	17/32	7.4	25.6	8.5	7 x 14	50	2130	50	1680	30
27 x 8.50-15	4	SKD-02	16/32	7.2	26.9	8.4	7 x 15	35	1840	35	1453	29
27 x 8.50-15	6	SKD-21	16/32	7.2	26.9	8.4	7 x 15	55	2400	55	1895	32
27 x 8.50-15	8	SKD-19	16/32	7.2	26.9	8.4	7 x 15	60	2875	60	2402	34
27 x 10.50-15	6	SKD-03	16/32	8.4	27.2	10.2	8.50 x 15	40	2480	40	1960	33

- Prolific Size Array provides Fitment Coverage for virtually All Skid Steer Machines in the Marketplace
- Directional Tread Design with Large Rubber to Void Ratio ensures Maximum Traction in Soft Soil





Ultra Skid

Heavy Duty Sidewall with Rim Guard
Tubeless – Nylon

SIZE	PLY	CODE	SKID DEPTH	TREAD WIDTH	O.D.	C.S.	RIM	5 m.p.h. MAX. INFL.	MAX. LOAD	10 m.p.h. MAX. INFL.	MAX. LOAD	WT.
10-16.5	10	SKD-74	22/32	9.7	30.6	10.8	8.25 x 16.5	75	4720	75	3730	54
12-16.5	12	SKD-76	26/32	12.1	33.3	13.1	9.75 x 16.5	80	6320	80	4990	73

- Import Tire featuring Extra Heavy Duty Sidewall with Rim Guard catering to the Price Conscious Customer
- Three Stage Lug Promotes Optimum Cleaning in any Environment



Industrial Tractor (R3)

Tubeless – Nylon

SIZE	PLY	CODE	SKID DEPTH	TREAD WIDTH	O.D.	C.S.	RIM	MAX. INFL.	MAX. LOAD	WT.
13.6-16	6	RTS-01	23/32	11.5	39.2	13.6	12 x 16	28	2340	73
18.4-16.1	6	RTS-02	29/32	16.0	43.9	13.5	16 x 16.1	16	2540	124
14.9-24	6	RTS-05	25/32	11.8	48.6	14.9	13 x 24	20	3000	113
16.9-24	6	RTS-03	27/32	14.5	51.0	17.8	15 x 24	18	3420	134
16.9-24	10	RTS-09	27/32	14.5	51.0	17.8	15 x 24	28	4400	140
18.4-26	6	RTS-07	30/32	15.25	56.5	18.7	16 x 26	16	3960	167
18.4-26	12	RTS-10	30/32	15.25	56.5	18.7	16 x 26	32	5840	186
23.1-26	12	RTS-08	34/32	18.0	62.2	24.9	20 x 26	24	7150	338
12.4-28	4	RTS-06	22/32	9.2	48.0	12.9	11 x 28	16	1980	96
13.6-28	6	RTS-04	24/32	11.5	51.0	13.7	12 x 28	22	2830	108

- Multi Purpose Diamond Tread provides Traction in Wide Variety of Terrain including Dirt, Gravel and Grass

25 M.P.H. Max. Speed.



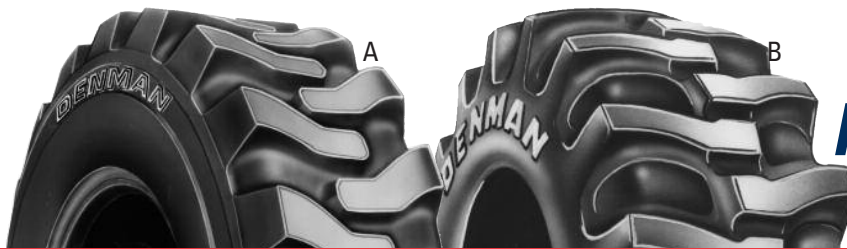
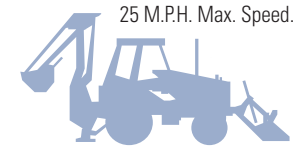


Super Backhoe II (F3)

Tubeless – Nylon

SIZE	PLY	CODE	SKID DEPTH	TREAD WIDTH	O.D.	C.S.	RIM	MAX. INFL.	MAX. LOAD	WT.
11L-15SL	10	FT-46	16/32	9.0	31.0	10.5	8 x 15	52	2340	44
11L-16SL	10	FT-47	16/32	9.3	31.2	10.4	8 x 16	52	2470	44
11L-16SL	12	FT-53	16/32	9.3	31.2	10.4	8 x 16	64	2760	46
14.5/75-16.1SL	10	FT-52	18/32	11.2	35.5	14.4	11 x 16.1	40	3200	85

- Free Rolling Front Backhoe tire, the Denman F3 is known throughout the Industry as a Best Value
- Tire Delivers Trouble-Free Service in all Construction Applications



Industrial Tractor (R4)

Tubeless – Nylon

SIZE	PLY	CODE	SKID DEPTH	TREAD WIDTH	O.D.	C.S.	RIM	MAX. INFL.	MAX. LOAD	WT.	DESIGN
10.5 x 80-18	10	RTR-50	30/32	9.0	35.3	11.2	9 x 18	54	4265	78	A
10.5 x 80-18	12	RTR-51	30/32	9.0	35.3	11.2	9 x 18	65	4940	78	A
12.5 x 80-18	12	RTR-53	31/32	11.3	39.2	12.9	9 x 18	54	5788	98	A
12.5 x 80-18	14	RTR-54	31/32	11.3	39.2	12.9	9 x 18	62	6600	98	A
12.5 x 80-20	10	RTR-55	31/32	11.0	40.5	13.6	10 x 20	36	5160	96	A
14.9-24	8	RTR-21	33/32	14.5	48.7	14.6	12 x 24	30	5080	120	B
16.9-24	8	RTR-22	33/32	15.8	51.1	17.3	15 x 24	28	5840	152	B
16.9-24	10	RTR-30	33/32	15.8	51.1	17.3	15 x 24	32	6400	157	B
16.9-24	12	RTR-35	33/32	15.8	51.1	17.3	15 x 24	38	7150	165	B
17.5L-24	8	RTR-20	32/32	16.8	49.5	17.3	15 x 24	26	5360	145	B
17.5L-24	10	RTR-31	32/32	16.8	49.5	17.3	15 x 24	32	6150	150	B
18.4-24	10	RTR-28	28/32	16.5	54.5	18.2	16 x 24	30	7400	183	B
18.4-24	12	RTR-36	28/32	16.5	54.5	18.2	16 x 24	32	8250	192	B
19.5L-24	10	RTR-23	37/32	18.2	51.6	19.7	15 x 24	28	6600	194	B
19.5L-24	12	RTR-24	37/32	18.2	51.6	19.7	15 x 24	34	7600	200	B
21L-24	12	RTR-25	37/32	19.7	53.9	21.1	18 x 24	32	8550	254	B
16.9-28	8	RTR-27	37/32	15.7	55.4	17.2	15 x 28	28	6150	171	B
16.9-28	10	RTR-26	37/32	15.7	55.4	17.2	15 x 28	32	6800	176	B
18.4-28	10	RTR-29	28/32	16.3	58.0	18.2	16 x 28	30	7850	206	B

- Extra Heavy Duty Sidewall Front Wheel Drive Assist tires Ensure Rim Protection in the Toughest Applications
- The Backhoe tire the Competition Strives to Duplicate
- Beveled Deck Area between the Bar Lugs on Rear Drive Tires Ensures Superior "Tread Cleaning"





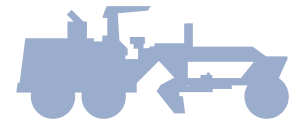
Road Grader (E-2/G-2)

Tubeless – Nylon

SIZE	PLY	CODE	SKID DEPTH	TREAD WIDTH	O.D.	C.S.	RIM	MAX. INFL.	MAX. LOAD	WT.
10.00-24	12	GRT - 44	24/32	8.5	44.5	10.9	8 x 24	45	4350	107
13.00-24	12	GRT - 12	29/32	10.5	50.1	13.3	8 x 24	44	6000	134
13.00-24	14	GRT - 47	29/32	10.5	50.1	13.3	8 x 24	51	6800	140
14.00-24	12	GRT - 07	31/32	11.5	52.8	14.1	8 x 24	36	6800	169
14.00-24	16	GRT - 10	31/32	11.5	52.8	14.1	8 x 24	51	8050	181
16.00-24	16	GRT - 31	35/32	12.8	57.5	17.2	10 x 24	44	9900	259

- Directional Dirt Tread Design delivers Maximum Performance in Soft Soil conditions
- Wide Array of Ply Ratings and Sizes enables Exact Fitment for Diverse Equipment

25 M.P.H. Max. Speed.
All loads & infl. @ G-2 application, refer to tire & rim for other applications.



Earthmover Traction (E-2/G-2/L-2)

Tubeless – Nylon

SIZE	PLY	CODE	SKID DEPTH	TREAD WIDTH	O.D.	C.S.	RIM	MAX. INFL.	MAX. LOAD	WT.
13.00-24	16	GRT - 55	29/32	10.5	50.1	13.3	8 x 24	87	14300	157
12.00-24	12	GRT - 19	27/32	10.6	48.0	12.2	8 x 24	75	11700	125
15.5-25	12	GRT - 13	29/32	12.5	50.1	15.3	12 x 25	58	12300	171
17.5-25	12	GRT - 05	31/32	13.4	53.5	17.6	14 x 25	51	13600	186
17.5-25	16	GRT - 25	31/32	13.4	53.5	17.6	14 x 25	69	16100	187
20.5-25	12	GRT - 21	35/32	16.5	58.5	20.5	17 x 25	36	14800	246
20.5-25	16	GRT - 33	35/32	16.5	58.5	20.5	17 x 25	51	18200	266
23.5-25	12	GRT - 50	40/32	23.2	64.6	23.3	19.5 x 25	33	17600	444
23.5-25	16	GRT - 51	40/32	23.2	64.6	23.3	19.5 x 25	44	20900	507

- Directional Dirt Tread Design delivers Maximum Performance in Soft Soil conditions
- Wide Array of Ply Ratings and Sizes enables Exact Fitment for Diverse Equipment

5 M.P.H. Max. Speed.
All loads & infl. @ L-2 application, refer to tire & rim for other applications.





RM 826 (L-3)

Tube Type – Nylon

SIZE	PLY	CODE	SKID DEPTH	TREAD WIDTH	O.D.	C.S.	RIM	MAX. INFL.	MAX. LOAD	WT.
14.00-24	24	RM-37	31/32	10.8	54.0	14.8	10 x 24	123	20943	227

- *Cut-Resistant Compounding and Durable Lug Design makes this tire the Perfect Fitment for Moderately Severe Loader and Heavy Duty Forklift Service*



RM 826 (E-3/L-3)

Tubeless – Nylon

SIZE	PLY	CODE	SKID DEPTH	TREAD WIDTH	O.D.	C.S.	RIM	MAX. INFL.	MAX. LOAD	WT.
17.5-25	16	RM-01	32/32	14.9	53.2	17.5	14 x 25	68	16093	278
20.5-25	16	RM-22	38/32	18.3	58.7	20.5	17 x 25	50	18187	355
20.5-25	20	RM-24	38/32	18.3	58.7	20.5	17 x 25	65	20943	359
23.5-25	20	RM-25	40/32	20.4	63.6	23.4	19.5 x 25	54	24030	478
26.5-25	24	RM-33	45/32	20.8	70.8	26.6	22 x 25	58	30864	700
29.5-25	28	RM-80	48/32	25.5	73.8	29.5	25 x 25	61	38580	959
29.5-29	28	RM-82	48/32	25.7	77.8	29.6	25 x 25	61	41887	1025
16.00-25	32	RM-31	35/32	14.0	58.7	16.9	11.25 x 25	126	27557	375
18.00-25	36	RM-32	39/32	16.2	63.6	19.5	13 x 25	123	35273	467

- *Cut-Resistant Compounding and Durable Lug Design makes this tire the Perfect Fitment for Moderately Severe Earthmover and Loader Service*





Denman Radial (E-3/L-3)

Tubeless – Steel

SIZE	SERVICE INDEX	STAR RATING	CODE	SKID DEPTH	O.D.	RIM	MAX. INFL.	MAX. LOAD	WT.
20.5R25	168B	★	RKR-32R	38/32	61.5	17 x 25	54	12300	551
20.5R25	177B	★★	RKR-43R	38/32	61.5	17 x 25	76	16100	560
23.5R25	176B	★	RKR-34R	40/32	66.8	19.5 x 25	54	15700	739
23.5R25	185B	★★	RKR-45R	40/32	66.8	19.5 x 25	76	20400	750

- All Steel Casing provides Superior Puncture Resistance and Durability.
- Computer Generated Self-Cleaning Tread Design provides Superior Traction
- Center Lug Bar Reduces Tread Squirm and Stabilizes Ride.



Mine King II

Tubeless and Tube Type – Nylon

SIZE	CODE	PLY	SKID DEPTH	TREAD WIDTH	O.D.	C.S.	RIM	MAX. INFL.	STATIC MAX. LOAD	WEIGHT
27 x 15-10 TT	MK - 43	24	26/32	14.0	26.91	15.23	13 x10	150	14870	127
8.25-15 TT	MK - 35	24	28/32	7.8	33.31	9.80	6.5 x15	135	12073	102
10.00-15 TT	MK - 47	24	28/32	9.3	35.70	10.95	7.5 x15	150	17550	127
32 x12-15 TT	MK - 33	24	32/32	11.0	32.17	13.58	11 x15	150	16400	129
32 x15-15 TT	MK - 49	24	32/32	13.1	32.16	14.35	11.5 x15	150	19000	145
32 x 15-15 TL	MK - 50	28	32/32	13.1	32.16	14.35	11.5 x15	150	19000	161
35 x 15-15 TL	MK - 37	32	32/32	12.2	34.71	14.22	11 x15	150	21490	219
38 x 16-15 TL	MK - 39	36	28/32	13.6	37.63	15.75	11 x15	150	30750	260
42 x 13-20 TT	MK - 30	32	28/32	11.0	41.70	13.12	9 to10 x 20	140	23750	232
12.00-20 TT	MK - 45	28	28/32	11.3	44.00	13.00	8.5 x 20	150	26020	224
14.00-20 TT	MK - 41	32	33/32	13.0	49.54	15.65	10 x 20	150	35795	335

- Designed from the Ground Up for use in Severe Duty Mine Applications, the Mine King is Exceedingly Durable, Long Lasting, and provides Exceptional Traction.

*Rubber liner insert can increase tire carrying capacity by 15 to 20 percent.
*Call for Special Marketing Terms and Conditions.





Industrial Lug (Forklift)

Tube Type – Nylon – Flaps Included

SIZE	PLY	CODE	SKID DEPTH	TREAD WIDTH	O.D.	C.S.	RIM	MAX. INFL.	MAX. LOAD	WT.	
18 x 7.0-8	*	16	DTL-25	21/32	5.5	18.1	6.6	4.33 x 8	145	4695	22
5.00-8	8	DTL-01	9/32	4.4	18.4	5.3	3.0 x 8	115	1830	11	
6.90-9	10	DTL-02	20/32	5.0	21.0	7.0	5.5 x 9	125	2820	20	
6.50-10	10	DTL-03	21/32	5.5	23.0	7.2	5.0 x 10	115	3210	24	
7.50-10	12	DTL-04	23/32	6.5	25.1	8.0	5.5 x 10	120	4300	39	
7.00-12	12	DTL-05	22/32	6.3	26.8	7.5	5.0 x 12	125	4555	35	
7.00-15	12	DTL-06	22/32	6.5	29.1	7.6	6.0 x 15	125	5275	41	
7.50-15	12	DTL-07	23/32	7.0	31.5	8.0	6.0 x 15	115	5845	50	
8.25-15	12	DTL-08	24/32	7.6	32.5	9.3	6.5 x 15	105	6595	58	
28 x 9.0-15	*	12	DTL-27	20/32	8.5	27.9	8.9	7.0 x 15	120	6880	54
28 x 9.0-15	*	14	DTL-28	20/32	8.5	27.9	8.9	7.0 x 15	140	7530	57

*Displayed Extra Heavy Duty Sidewall with Rim Guard Available Only in DTL-25/DTL-27/DTL-28

5 M.P.H. Max. Speed. All loads & infl. @ Industrial vehicle application, refer to tire & rim for other applications.

- Diverse Size Offerings Enable Fitment for almost any Lift Truck
- Built by Denman for Decades, Proven Performance has made this Line Renown Throughout the Industry





Smooth Compactor (C-1)

Tubeless and Tube Type – Nylon

SIZE	PLY	CODE	TREAD WIDTH	O.D.	C.S.	RIM	MAX. INFL.	MAX. LOAD	WT.
7.50-15	6	IND-50	7.2	31.3	9.7	6.5 x 15	55	3900	43
7.50-15 TL*	6	IND-51	7.2	31.3	9.7	6.5 x 15	55	3900	48
7.50-15	12	IND-52	7.2	31.3	9.7	6.5 x 15	110	5860	48
7.50-15	14	IND-53	7.2	31.3	9.7	6.5 x 15	125	6300	56

- *Designed for Road Construction Equipment used to Smooth Dirt before Applying Asphalt*
- *Sought after Round Shoulder Construction enables Equipment to make Sharp Corners while still Maintaining Smooth Dirt Surface*

5 M.P.H. Max. Speed.
*Drop Center or Semi-Drop Center Rim.



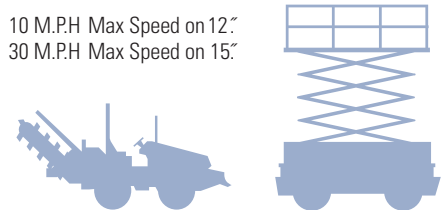
Omni Trax

Tubeless – Nylon

SIZE	PLY	CODE	SKID DEPTH	TREAD WIDTH	O.D.	C.S.	RIM	MAX. INFL.	MAX. LOAD	WT.
26 x 12.00-12	10	DDD - 22	19/32	10.4	25.4	12.3	10.5 x 12	60	3380	35
31 x 15.50-15	8	DDD - 20	24/32	14.2	31.8	15.1	13 x 15	45	2760	57
31 x 15.50-15	10	DDD - 21	24/32	14.2	31.8	15.1	13 x 15	60	3200	59

- *All Purpose Tread Design Proven to work well on both Dirt and Asphalt Applications*
- *Used on both Trenchers and Man Lifts, the Specially Designed Flat Tread Face provides Sure-Footed Stability along with Excellent Traction*

10 M.P.H. Max Speed on 12"
30 M.P.H. Max Speed on 15"



Turf Hugger

Tubeless – Nylon

SIZE	PLY	CODE	SKID DEPTH	TREAD WIDTH	O.D.	C.S.	RIM	MAX. INFL.	MAX. LOAD	WT.
20 x 8.00-10	4	DDD - 30	10/32	7.6	20.0	8.1	6 x 10	24	895	13
26 x 12.00-12	6	DDD - 01	12/32	10.0	25.4	11.2	10.5 x 12	30	2250	29
31 x 15.50-15	8	DDD - 04	13/32	14.3	30.6	14.7	13 x 15	45	2760	59

- *A Premium Grade First Choice among Golf Course Groundskeeping Professionals*
- *Round Shoulder Design Minimizes Turf Damage while Heavy Casing Delivers Trouble-Free Usage, delivering Best All Around Industry Performance*

10 M.P.H. Max Speed on 10"
10 M.P.H. Max Speed on 12"
30 M.P.H. Max Speed on 15"





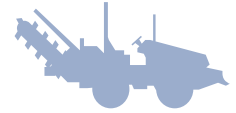
Ditch Digger

Tubeless – Nylon

SIZE	PLY	CODE	SKID DEPTH	TREAD WIDTH	O.D.	C.S.	RIM	MAX. INFL.	MAX. LOAD	WT.
23 x 10.50-12	4	DDD - 15	20/32	9.8	23.0	9.9	8.5 x 12	20	1340	23
26 x 12.00-12	6	DDD - 03	19/32	10.5	25.0	12.3	10.5 x 12	30	2250	27
26 x 12.00-12	8	DDD - 11	19/32	10.5	25.0	12.3	10.5 x 12	50	3020	30
26 x 12.00-12	10	DDD - 13	19/32	10.3	25.0	12.3	10.5 x 12	60	3380	34
29 x 12.50-15	6	DDD - 09	21/32	12.0	29.4	12.5	10 x 15	30	1680	45
31 x 15.50-15	8	DDD - 02	24/32	14.4	31.5	14.7	13 x 15	45	2760	58

- Sets the Standard for Trencher tires with Beefy "WIDE" Casing ensuring Maximum Durability and Optimum Flotation
- Beveled Deck Area between the bar lugs ensures Exceptional Tread Cleaning to Deliver Maximum Traction in the Softest of Soils

10 M.P.H Max Speed on 12"
30 M.P.H Max Speed on 15"



OFF HIGHWAY WORK TIRES

AGRICULTURAL TIRES



Farm Hand A/P Tractor (R-1)

Tubeless – Nylon

SIZE	PLY	CODE	SKID DEPTH	TREAD WIDTH	O.D.	C.S.	RIM	MAX. INFL.	MAX. LOAD	WT.
5-12	6	TAP-08	26/32	4.3	21.0	5.0	4 x 12	52	615	13
6-12	6	TAP-09	26/32	5.1	23.0	6.1	5 x 12	40	740	16
6-14	6	TAP-12	28/32	5.2	24.7	6.1	5 x 14	42	825	21
7-14	6	TAP-04	32/32	6.1	27.0	7.4	6 x 14	36	990	28
6-16	6	TAP-10	28/32	5.0	27.0	5.9	5 x 16	42	935	22
7-16	6	TAP-01	32/32	6.1	29.0	7.5	6.5 x 16	36	1100	32
8-16	6	TAP-03	33/32	7.0	30.4	8.2	7 x 16	28	1360	36
9.5-16	6	TAP-06	37/32	9.0	33.0	9.5	8 x 16	30	1390	48

- Used primarily for small Front Wheel Drive Assist Tractors
- A Superior Quality Trouble Free Performer

25 M.P.H. Max. Speed.





Farm Hand A/P Tractor (R-1)

Tube Type – Nylon

SIZE	PLY	CODE	SKID DEPTH	TREAD WIDTH	O.D.	C.S.	RIM	MAX. INFL.	MAX. LOAD	WT.
8.3-24 TT	6	RF-03	31/32	7.9	38.8	8.3	7.0 x24	34	1610	47
9.5-24 TT	6	RF-05	33/32	8.7	41.2	9.5	8.0 x24	30	1870	59
11.2-24 TT *	6	RF-07	36/32	10.7	42.0	11.5	10.0 x24	26	2090	76
12.4-24 TT	8	RF-09	38/32	11.8	44.0	12.5	11.0 x24	32	2830	88
13.6-24 TT	8	RF-11	42/32	13.4	47.8	14.3	12.0 x24	28	3080	102
14.9-24 TT	8	RF-13	42/32	14.0	49.2	14.8	13.0 x24	26	3520	118
11.2-28 TT *	6	RF-15	32/32	10.4	46.9	11.1	10.0 x28	26	2200	80
12.4-28 TT *	8	RF-17	38/32	11.8	49.6	12.5	11.0 x28	32	3000	99
13.6-28 TT	8	RF-19	42/32	12.5	52.0	13.2	12.0 x28	28	3300	112
14.9-28 TT	8	RF-21	42/32	14.6	54.6	15.2	13.0 x28	26	3740	120
16.9-28 TT	8	RF-23	43/32	16.7	57.0	17.6	15.0 x28	24	4300	151
16.9-30 TT	10	RF-25	43/32	16.9	59.0	17.6	15.0 x30	28	4940	154
18.4-30 TT	10	RF-27	45/32	17.9	61.0	18.7	16.0 x30	26	5520	202
18.4-34 TT	10	RF-29	45/32	18.0	64.1	18.4	16.0 x34	26	6000	205
11.2-38 TL	8	RF-31	36/32	10.7	57.0	11.2	10.0 x38	32	2720	97
11.2-38 TT	8	RF-33	36/32	10.7	57.0	11.2	10.0 x38	32	2720	98
12.4-38 TT	8	RF-57	42/32	11.8	58.8	12.5	11.0 x38	32	3520	127
13.6-38 TT	8	RF-59	45/32	12.6	61.1	13.4	12.0 x38	28	3740	157
15.5-38 TT	10	RF-35	45/32	14.8	61.0	15.4	14.0 x38	30	4050	145
18.4-38 TT	10	RF-37	45/32	18.0	68.0	18.4	16.0 x38	26	6400	229

■ The Denman Farm Hand A/P Tractor has quickly been recognized as a “BEST VALUE” in the Farm Community

■ Prolific Size Array enables Fitment to Very Broad Range of Tractors and Enables Dealers to always have the Right tire for the Customer

*Indicates a 45 degree lug



Farm Hand Irrigation (R-1)

Tube Type – Nylon – Flap Included

SIZE	PLY	CODE	SKID DEPTH	TREAD WIDTH	O.D.	C.S.	RIM	MAX. INFL.	MAX. LOAD	WT.
11.2-24 TT	4	RF-39	36/32	10.8	42.0	11.5	10.0 x24	18	1650	76
11.2-38 TT	4	RF-41	36/32	10.7	57.0	11.2	10.0 x38	18	2090	93
14.9-24 TT	6	RF-43	42/32	14.0	49.2	14.8	13.0 x24	20	3000	112



Farm Hand Front Tractor (3-Rib F-2)

Tubeless and Tube Type – Nylon

SIZE	PLY	CODE	SKID DEPTH	TREAD WIDTH	O.D.	C.S.	RIM	MAX. INFL.	MAX. LOAD	WT.
4.00-12 TT	4	DFH-01	12/32	3.8	21.0	4.3	3.0 x 12	52	495	10
4.00-19 TT	4	DFH-03	12/32	3.8	28.3	4.4	3.0 x 19	52	715	12
5.00-15 TT	4	DFH-11	17/32	4.2	24.9	4.9	3.0 x 15	44	715	12
5.50-16 TT	8	DFH-13	17/32	4.9	27.4	5.4	4.0 x 16	64	1200	18
5.50-16 TL	8	DFH-15	17/32	4.9	27.4	5.4	4.0 x 16	64	1200	19
6.00-16 TT	8	DFH-17	17/32	6.2	28.8	6.6	4.0 x 16	68	1360	19
6.00-16 TL	8	DFH-59	17/32	6.2	28.8	6.6	4.0 x 16	68	1360	20
6.50-16 TT	8	DFH-21	17/32	6.4	28.8	6.7	4.5 x 16	60	1475	21
6.50-16 TL	8	DFH-61	17/32	6.4	28.8	6.7	4.5 x 16	60	1475	22
7.50-16 TT	8	DFH-25	22/32	7.6	31.4	8.3	5.5 x 16	56	1710	31
7.50-16 TL	10	DFH-27	22/32	7.6	31.4	8.3	5.5 x 16	68	1960	33
7.50-18 TL	8	DFH-65	27/32	7.4	33.0	7.8	5.5 x 18	56	1870	37
7.50-20 TT	6	FT-15	32/32	6.4	35.9	7.9	5.5 x 20	44	1710	36
7.5L-15 TT	6	FT-30	26/32	6.9	29.0	8.4	6 x 15	44	1430	29
9.5L-15 TT	8	DFH-07	22/32	8.9	30.6	9.4	7.0 x 15	48	1870	38
11L-15 TT	8	DFH-09	25/32	9.5	32.1	10.8	8.0 x 15	44	2090	43
10.00-16 TT	10	DFH-37	28/32	8.9	34.1	10.2	8.0 x 16	56	2800	53
10.00-16 TL	10	DFH-69	28/32	8.9	34.1	10.2	8.0 x 16	56	2800	54
11.00-16 TT	10	DFH-45	28/32	10.5	37.2	11.2	10.0 x 16	48	2910	60
11.00-16 TL	12	DFH-47	28/32	10.5	37.2	11.2	10.0 x 16	60	3420	62

- Three Rib Design Provides Perfect Front Tire Fitment for All Purpose Tractors
- Suitable for All Types of Farming, the Farm Hand F2 is the Tire To Count On

25 M.P.H. Max. Speed.

*Tubeless tires may be used with a tube.



Farm Hand Front Tractor (4-Rib F-2)

Tubeless and Tube Type – Nylon

SIZE	PLY	CODE	SKID DEPTH	TREAD WIDTH	O.D.	C.S.	RIM	MAX. INFL.	MAX. LOAD	WT.
10.00-16 TL	10	DFH-67	28/32	9.0	34.6	10.3	8.0 x 16	56	2800	56
11.00-16 TT	10	DFH-49	28/32	10.6	37.7	11.2	10.0 x 16	48	2910	64
11.00-16 TL	12	DFH-51	28/32	10.6	37.7	11.2	10.0 x 16	60	3420	66
14L-16.1 TL	10	DFH-57	32/32	12.8	38.4	13.5	11.0 x 16.1	44	3420	101

- Four Ribs promote Flotation, Reduce Side Hill Slippage and Provide Sharp Steering
- The Denman Farm Hand 4 Rib F2 Provides Performance

25 M.P.H. Max. Speed.

*Tubeless tires may be used with a tube.





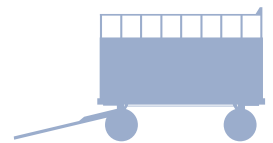
Farm Hand Implement (I-1)

Tubeless and Tube Type – Nylon

SIZE	PLY	CODE	SKID DEPTH	TREAD WIDTH	O.D.	C.S.	RIM	MAX. INFL.	MAX. LOAD	WT.
9.5L-14 TT	8	IF-01	8/32	8.8	29.0	9.4	7.0 x 14	44	2400	26.5
9.5L-14 TL	8	IF-03	8/32	8.8	29.0	9.4	7.0 x 14	44	2400	27
11L-14 TT	8	IF-15	8/32	9.8	29.4	10.8	8.0 x 14	36	2470	28
11L-14 TL	8	IF-17	8/32	9.8	29.4	10.8	8.0 x 14	36	2470	29
6.70-15 TT	8	IF-31	7/32	6.0	27.5	6.6	4.5 x 15	60	2010	18
6.70-15 TL	8	IF-33	7/32	6.0	27.5	6.6	4.5 x 15	60	2010	18
7.60-15 TT	8	IF-35	8/32	6.8	28.7	7.5	5.5 x 15	52	2090	23
7.60-15 TL	8	IF-37	8/32	6.8	28.7	7.5	5.5 x 15	52	2090	23
9.5L-15 TT	8	IF-05	11/32	9.0	30.0	9.8	7.0 x 15	44	2470	28
9.5L-15 TL	8	IF-07	11/32	9.0	30.0	9.8	7.0 x 15	44	2470	29
11L-15 TT	8	IF-09	11/32	9.9	31.2	10.8	8.0 x 15	36	2540	30
11L-15 TL	8	IF-11	11/32	9.9	31.2	10.8	8.0 x 15	36	2540	32
11L-15 TL	12	IF-13	11/32	9.9	31.2	10.8	8.0 x 15	52	3200	33
12.5L-15 TT	12	IF-23	11/32	11.1	32.1	12.1	10.0 x 15	52	3860	40
12.5L-15 TL	12	IF-25	11/32	11.1	32.1	12.1	10.0 x 15	52	3860	41
11L-16 TT	10	IF-19	11/32	9.9	31.4	10.8	8.0 x 16	44	3000	33
11L-16 TL	10	IF-21	11/32	9.9	31.4	10.8	8.0 x 16	44	3000	35
12.5L-16 TT	10	IF-27	11/32	11.2	33.1	12.3	10.0 x 16	44	3680	43
12.5L-16 TL	14	IF-29	11/32	11.2	33.1	12.3	10.0 x 16	56	4180	45
11.25-28 TT	12	IMP-81	9/32	10.3	50.0	13.2	10.0 x 28	48	5360	76

■ Designed for Free Rolling Wheels on Wagons and Trailers, the Denman Farm Hand is a Proven Performer

25 M.P.H. Max. Speed.
*Tubeless tires may be used with a tube.

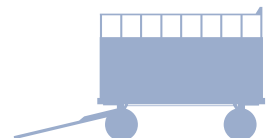


Farm Hand Highway Service (F-1)

Tubeless – Nylon

SIZE	PLY	CODE	SKID DEPTH	TREAD WIDTH	O.D.	C.S.	RIM	MAX. INFL.	MAX. LOAD	WT.
9.5L-15	8	IMP-15	10/32	7.0	30.3	10.4	8.0 x 15	60	2680	39
11L-15 *	8	IMP-16	10/32	7.7	30.8	11.2	8.0 x 15	60	3080	41
11L-15 *	12	IMP-12	10/32	7.7	30.8	11.2	8.0 x 15	90	3960	49

*Available September 2009



Denman Express (Medium/Heavy Bias Truck)

Tubeless and Tube Type – Nylon – Flap Included



	SIZE	PLY	CODE	SKID DEPTH	TREAD WIDTH	O.D.	C.S.	RIM	Max. Infl. SINGLE	Max. Infl. DUAL	Max. Load SINGLE	Max. Load DUAL	WT.	DESIGN
HIGHWAY	7.50-20 (Set)	14	DEX-73	16/32	6.0	36.8	8.5	6.0 x 20	115	105	4190	3640	72	A
	8.25-20 (Set)	14	DEX-71	19/32	6.3	38.4	9.3	6.5 x 20	115	105	4940	4410	75	A
	9.00-20 (Set)	14	DEX-72	19/32	7.0	40.0	10.2	7.0 x 20	110	100	5675	5070	86	A
	10.00-20 (Set)	14	DEX-70	13/32	7.5	41.5	10.9	7.5 x 20	100	90	6175	5355	89	A
	11-22.5 TL*	14	DEX-81	14/32	7.5	41.6	11.0	8.25 x 22.5	100	90	6175	5355	88	B
	11-22.5 TL*	16	DEX-60	14/32	7.5	41.6	11.0	8.25 x 22.5	115	105	6610	5840	90	B
	11-24.5 TL*	12	DEX-09	17/32	7.5	42.0	11.0	8.25 x 24.5	85	75	5840	5070	97	B
CROSS LUG	7.50-20 (Set)	14	DEX-76	16/32	6.0	36.8	8.5	6.0 x 20	115	105	4190	3640	74	C
	8.25-20 (Set)	14	DEX-77	19/32	6.3	38.4	9.3	6.5 x 20	115	105	4940	4410	77	C
	9.00-20 (Set)	14	DEX-78	19/32	7.0	40.0	10.2	7.0 x 20	110	100	5675	5070	88	C
	10.00-20 (Set)	16	DEX-79	19/32	7.7	41.6	11.0	7.5 x 20	115	105	6610	5840	98	C
TRACTION	7.50-20	10	DEX-19	21/32	7.3	38.2	9.4	6.0 x 20	90	80	3530	3100	59	D
	8.25-20	10	DEX-16	23/32	7.9	39.3	9.8	6.5 x 20	85	75	4080	3640	74	D
	9.00-20	10	DEX-15	25/32	8.4	40.9	10.6	7.0 x 20	80	70	4675	4080	83	D
	10.00-20	12	DEX-14	25/32	9.1	42.8	11.4	7.5 x 20	85	75	5510	4805	97	D

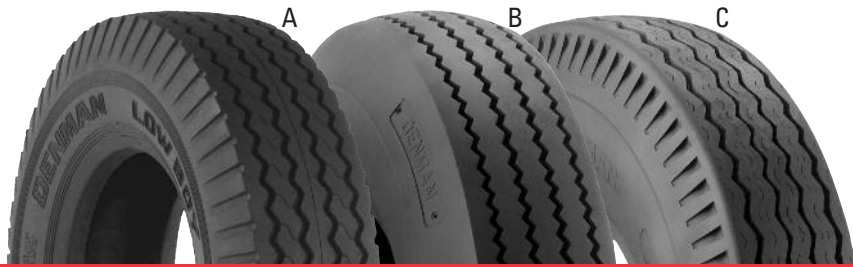
■ Most Complete line of Medium Bias offered by any Manufacturer, featuring Highway, Cross Bar, and Traction Tread Designs

Tire, Tube & Flap (Set) *Flap not included.



AGRICULTURAL TIRES

ON HIGHWAY COMMERCIAL TIRES



Denman Premium Low Boy (LPT)

Tubeless and Tube Type – Nylon – Flaps Included

SIZE	PLY	CODE	SKID DEPTH	TREAD WIDTH	O.D.	C.S.	RIM	Max. Infl.		Max. Load		WT.	DESIGN
								SINGLE	DUAL	SINGLE	DUAL		
8-14.5 TL	14	TR-82	10/32	5.6	27.8	8.0	6 x 14.5	115	115	3000	2680	34	A
7.50-15TR	12	LPT-15	12/32	5.6	31.7	8.7	6 x 15	105	95	3305	2835	40	B
9.00-15TR	14	LPT-19	16/32	6.9	35.3	10.7	7.5 x 15	110	100	4805	4190	58	C
10.00 -15TR	14	LPT-21	17/32	7.4	37.1	10.9	7.5 x 15	100	90	5070	4540	67	C
10.00 -15TR	16	LPT-23	17/32	7.4	37.1	10.9	7.5 x 15	115	105	5675	4940	72	C

- Popular in the Construction Industry on Trailers used to Haul Equipment, Denman's Heavy Duty Casing makes this Tire a Performer in the Toughest Applications



Military Design (NDT)

Tubeless – Nylon



SIZE	PLY	CODE	SKID DEPTH	TREAD WIDTH	O.D.	C.S.	RIM	MAX. INFL.	MAX. LOAD	WT.
9.00-16	8	TR-12	18/32	7.9	35.2	10.1	6.50H x 16	50	3030	53

- A tire built by Denman for Decades, the standard Military Tread Design offers Proven On and Off Road Performance



Denman Jumbo Trak (ML)

Tubeless – Nylon

SIZE	PLY	CODE	SKID DEPTH	TREAD WIDTH	O.D.	C.S.	RIM	MAX. INFL.	MAX. LOAD	WT.
14-17.5 ML	10	TR-91	18/32	11.0	35.3	14.0	10.5 x 17.5	70	4800	75

■ *D.O.T. Approved Tire Specially Suited for Asphalt and Groomed Soil, used in a Variety of Applications including Forklift and Agriculture Service*

55 M.P.H. Max. Speed



Denman Ground Hawg (ML)

Tubeless – Nylon

SIZE	PLY	CODE	SKID DEPTH	TREAD WIDTH	O.D.	C.S.	RIM	MAX. INFL.	MAX. LOAD	WT.
14-17.5 ML	10	TR-90	24/32	10.0	35.0	12.5	10.5 x 17.5	70	4800	83

■ *D.O.T. Approved Tire Specially Suited for Rough Terrain, used in a Variety of Applications including Forklift and Agricultural Service*

55 M.P.H. Max. Speed

Denman Express (Commercial Light Truck)

Tubeless and Tube Type – Nylon



SIZE	PLY	CODE	SKID DEPTH	TREAD WIDTH	O.D.	C.S.	RIM	MAX. INFL.	Max. Load SINGLE	Max. Load DUAL	WT.	DESIGN
6.70-15	6	TOR-66	15/32	5.1	29.1	7.5	5.0 x 15	45	1520	1355	30	A
7.00-15	8	TOR-45	12/32	5.4	29.6	7.6	5.5 x 15	60	2040	1820	29	E
**6.50-16	6	TOR-14	13/32	5.5	30.0	7.1	4.5 x 16	45	1610	1435	33	C
**7.00-16	6	TOR-15	14/32	5.8	30.8	8.1	5.5 x 16	45	1800	1580	38	C
7.50-16	10	TOR-49	12/32	5.7	31.8	8.7	6.0 x 16	75	2755	2470	35	E
7.50-16	8	TOR-04	18/32	6.4	32.2	8.7	6.0 x 16	60	2470	2150	39	B
**7.50-17 TT	8	TOR-18	15/32	6.4	34.4	9.0	6.0 x 17	75	2800	2460	45	C
**7.50-17 TT	10	TOR-16	15/32	6.4	34.4	9.0	6.0 x 17	90	3170	2780	45	C
**7.50-17 TT	10	TOR-17	22/32	6.0	34.2	8.8	6.0 x 17	90	3170	2780	44	B
8.00-16.5	8	TOR-70	14/32	6.3	28.6	8.5	6.75 x 16.5	60	2040	1825	30	A
8.75-16.5	8	TOR-71	14/32	7.0	29.4	8.8	6.75 x 16.5	60	2405	2095	33	A
8.75-16.5	10	TOR-76	14/32	7.0	29.4	8.8	6.75 x 16.5	80	2680	2405	36	A
9.50-16.5	8	TOR-72	15/32	7.5	31.0	9.6	6.75 x 16.5	60	2835	2470	39	A
9.50-16.5	10	TOR-73	15/32	7.5	31.0	9.6	6.75 x 16.5	75	3195	2835	41	A
10-16.5	8	TOR-59	15/32	7.6	30.2	10.6	8.25 x 16.5	60	2755	2470	44	D
12-16.5	12	TOR-74	15/32	8.8	32.2	12.2	9.75 x 16.5	75	4080	3640	58	A
12-16.5	14	TOR-75	15/32	8.8	32.2	12.2	9.75 x 16.5	90	4490	3950	62	A
8-17.5 LT	8	TOR-22	15/32	5.8	30.8	8.0	6.0 x 17.5	60	2470	2150	36	A
8-19.5	10	TOR-21	15/32	6.2	34.6	8.4	6.0 x 19.5	80 90 DUAL SINGLE	3195	2835	47	C

- One of the Best Known Light Truck Bias Brands in the Business
- Sought after because of its Proven Performance, our Complete Line Accommodates Virtually All Fitments

** Tornel Brand





Denman Classic IV (Classic Passenger)

Tubeless – Polyester

SIZE	PLY	CODE	W/W WIDTH	SKID DEPTH	TREAD WIDTH	O.D.	C.S.	RIM	MAX. INFL.	MAX. LOAD	WT.
G78-14	4	DC-431	3-1/2"	11/32	5.3	27.2	8.7	6 x 14	32	1620	25
G78-15	4	DC-441	3-1/4"	11/32	5.3	28.0	8.1	6 x 15	32	1620	27
L78-15	4	DC-451	4-1/2"	11/32	5.7	29.5	9.1	6 x 15	32	1970	29

- Built in the Denman factory since 1919, our Classic tires are Renowned Throughout the World for their Exceptional Quality



Denman Columbia Deluxe (Classic Passenger)

Tubeless – Nylon

SIZE	PLY	CODE	SKID DEPTH	TREAD WIDTH	O.D.	C.S.	RIM	MAX. INFL.	MAX. LOAD	WT.
6.00-16	4	PAS-25	10/32	4.5	28.3	6.7	4.5 x 16	32	1400	16
6.00-16	6	PAS-50	10/32	4.5	28.3	6.7	4.5 x 16	36	1500	19

Black sidewall only.



Denman Coyote (Light Truck)

Tubeless – Polyester – Steel Belted Radial – Raised Black Letter

SIZE	PLY	CODE	SKID DEPTH	TREAD WIDTH	O.D.	C.S.	RIM	MAX. INFL.	MAX. LOAD	WT.
LT 305/85R-16	10	COY-11R	16/32	9.0	36.0	12.4	8 x 16	69	3640	72

- Heavy Duty tire, Pinned for Studs, Nothing Rivals the Durability of the Coyote



ON HIGHWAY COMMERCIAL TIRES

ON HIGHWAY CONSUMER TIRES



Denman Express (S/T Bias)

Tubeless – Nylon

SIZE	PLY	CODE	SKID DEPTH	TREAD WIDTH	O.D.	C.S.	RIM	MAX. INFL.	MAX. LOAD	WT.
ST175/80D13	6	DST - 01	11/32	4.5	24.1	7.5	5.0 x 13	50	1360	17
ST205/75D14	6	DST - 03	11/32	5.4	26.2	7.9	5.5 x 14	50	1760	22
ST215/75D14	6	DST - 04	11/32	5.7	26.8	8.5	6.0 x 14	50	1870	25
ST205/75D15	6	DST - 05	11/32	6.0	27.9	8.5	5.5 x 15	50	1820	26
ST225/75D15	6	DST - 07	11/32	6.0	28.5	8.7	6.0 x 15	50	2150	27
ST225/75D15	8	DST - 08	11/32	6.0	28.5	8.7	6.0 x 15	65	2540	31

- A Premium tire with Extra Heavy Bead Construction to ensure Trouble-Free Performance Under Heavy Load
- The Denman Express S/T Bias is One of Our Best Selling Lines



Denman Cargo Carrier

Tubeless – Steel Belted

SIZE	PLY	CODE	SKID DEPTH	TREAD WIDTH	O.D.	C.S.	RIM	MAX. INFL.	MAX LOAD SINGLE	MAX LOAD DUAL	WT.
ST175/80R13	6	CGO-10R	10/32	5.0	24.0	6.9	5.0 x 13	50	1360	1200	20
ST205/75R14	6	CGO-12R	10/32	5.8	26.1	7.9	5.5 x 14	50	1760	1570	25
ST215/75R14	6	CGO-14R	10/32	6.0	26.7	8.5	6.0 x 14	50	1870	1650	27
ST205/75R15	6	CGO-16R	10/32	5.8	27.1	7.9	5.5 x 15	50	1820	1610	28
ST205/75R15	8	CGO-18R	10/32	5.8	27.1	7.9	5.5 x 15	65	2150	1870	31
ST225/75R15	8	CGO-20R	10/32	6.0	28.3	8.7	6.0 x 15	65	2540	2200	35
ST225/75R15	10	CGO-22R	10/32	6.0	28.3	8.7	6.0 x 15	80	2830	2470	34
ST235/80R16	10	CGO-24R	10/32	6.5	30.8	9.2	6.5 x 16	80	3520	3080	44



Special Production Run Items

Each tire has a **Minimum
Production Run of 135 units.**

*Please Contact Your Regional
Sales Manager for Details.*

SIZE	PLY	CODE	DESCRIPTION	MINIMUM WT.	RUN
8.20-15 TL	4	DC-031	SUPER SAFETY 4-7/8" WW	30	135
6.00-16 TT	4	DC-041	SUPER SAFETY 3-1/2" WW	19	135
5.25/5.50-17 TT	4	DC-08	CLASSIC BLK	18	135
5.25/5.50-17 TT	4	DC-081	CLASSIC WW	19	135
5.25/5.50-18 TT	4	DC-09	CLASSIC WW	15	135
5.25/5.50-18 TT	4	DC-091	CLASSIC 3-1/8" WW	16	135
4.75/5.00-19 TT	4	DC-10	CLASSIC BLK	16	135
4.75/5.00-19 TT	4	DC-101	CLASSIC 2-7/8" WW	16	135
4.40/4.50-21 TT	4	DC-11	CLASSIC BLK	17	135
4.40/4.50-21 TT	4	DC-111	CLASSIC 2-5/8" WW	18	135
7.50-17 TT	6	DC-15	CLASSIC BLK	29	135
7.50-17 TT	6	DC-151	CLASSIC 4" WW	29	135
6.00-20 TT	6	DC-161	CLASSIC 2-5/8" WW	26	135
6.50-20 TT	6	DC-171	CLASSIC 3" WW	30	135
7.00-18 TT	6	DC-18	CLASSIC BLK	27	135
7.00-18 TT	6	DC-181	CLASSIC WW	28	135
7.00-20 TT	6	DC-19	CLASSIC BLK	31	135
7.00-20 TT	6	DC-191	CLASSIC 3-1/4" WW	32	135
6.00-15 TL	4	DC-241	ELEGANTE CLASSIC 2-1/2" WW	19	135
6.70-15 TL	4	DC-321	CLASSIC WW	24	135
6.00-16 TT	4	DC-581	COLUMBIA DELUXE 2-1/2" WW	19	135
11.00-18 TL	12	IL-61	MILITARY NDCC BLK	69	70
7.50-16 TL	10	IL-69	ARMORED LUG BLK	58	135
6.00-16 TT	4	TR-04	MILITARY NDT BLK	20	135
7.50-15 TL	6	TR-15	MILITARY NDT BLK	35	135
6.00-20 TT	6	TR-18	RIB TRUCK BLK	27	135
6.00-20 TT	8	TR-19	RIB TRUCK BLK	27	135
6.50-20 TT	6	TR-20	RIB TRUCK BLK	30	135
7.00-20 TT	10	TR-23	TRUCK BLK	37	135
7.00-16 TT	6	TR-42	MILITARY NDCC BLK	25	135
6.00-16 TT	6	TR-46	MILITARY NDT BLK	21	135
7.50-20 TT	8	TR-56	MILITARY NDT BLK	43	135
8.25-20 TT	12	TR-67	MILITARY NDT BLK	56	135
14.00-20 TT	12	TR-70	MILITARY NDCC BLK	140	135
12.00-20 TT	14	TR-71	MILITARY NDT BLK	101	135
9.00-20 TT	8	TR-89	MILITARY NDCC BLK	57	135
14.00-20 TL	12	TR-94	MILITARY NDCC BLK	150	135

Specified Rim Sizes for Light Truck

Rim Selection

Tires are designed for use on rims which meet **Tire and Rim Association Standards**. To insure proper tire to rim fit, and tire mountability, rims used with these tires must comply with the **Tire and Rim Association Standards**.

Loads and Inflations for Rims and Wheels

Important – Rim dimensions are standardized by the Tire and Rim Association for size and contour only, and particular tire and rim combinations are designed to assure proper mounting and fit of the tire to

the rim. The load and cold inflation pressure imposed on the rim and wheel must not exceed the rim and wheel manufacturer's recommendations even though the tire may be approved for a higher load or inflation. Rims and wheels may be identified (stamped) with a maximum load and maximum cold inflation rating. For rims and wheels not so identified or for service conditions exceeding the rated capacities, consult the rim and wheel manufacturer to determine rim and wheel capacities for the intended service.

Tire marking supersedes any printed material to the contrary.

WARNING

IF YOU ARE USING THIS PRODUCT WITH A TUBE

Inspect the inside carefully. Remove all tags and stickers, dirt or other debris found inside *before installing tube.*

Any objects left in the tire may cut the tube and cause the tube to lose air. Sudden or gradual loss of air will cause the tire to separate and fail in service which could result in serious injury or death.

WARNING

Please insure that this tire's **MAX. LOAD**

rating is more than the actual tire load of the vehicle. Highway vehicles have *tire/loading placards* or certification labels affixed to the door edge, door post, or on the glove box door that contain the following important information:

1. **Tire Size;**
2. **Cold Inflation Pressure;**
3. **Gross Axle Weight Ratings (GAWR) for each axle.**

If there is no placard or label, consult the vehicle owner's manual or check with the tire or vehicle manufacturer for proper inflation.

Please insure that this tire's **MAX. LOAD** rating is **EQUAL TO OR GREATER THAN** the **MAX. LOAD** rating of the original tire.

Underinflation and/or overloading can cause sudden tire failure.

CAUTION

IMPORTANT REPLACEMENT TIRE SELECTION AND MAINTENANCE INFORMATION

Replacement tires must be rated equal to or greater than the tires specified by the vehicle manufacturer for:

"MAX. LOAD CAPACITY"

Tires must be inflated to the air pressure as specified by the vehicle manufacturer, up to but not exceeding the maximum pressure imprinted on the tire sidewall.

The GVW (Gross Vehicle Weight) must not exceed the rated capacity of the tires.

Failure to follow either of these safety warnings may cause tread separations and/or tire failure, which may be accompanied with loss of vehicle control and serious personal injury.

Vibration or ride disturbance may mean a tire is separating or a serious problem is developing with the vehicle. Do not continue to drive a vibrating vehicle.

Overloading the tire or operating the tire below the prescribed air pressure causes the build up of excess heat which may result in sudden tire failure.

Air pressure should be checked at least once a month when the tires are cold and **always** before long distance trips.

Limited Warranty

Revised September 1, 2000

A. Warranty Coverage

The Denman Tire Corporation (Denman) warrants that its (i) passenger, truck, mining, industrial, off the road, and farm tires bearing Denman's name and or serial number and tires imported by Denman, are free from defects in material and workmanship for the periods set forth below when mounted, serviced and used in a reasonable manner. Many times the cause of the condition in the tire is not obvious. A warranty adjustment does not mean that a determination was made that there was a defect in workmanship or materials.

If a DENMAN TIRE bearing Denman's name and/or serial number and tires imported by Denman, proves to be adjustable during the tread life of the tire, but limited to the first 60 months from the date of manufacture, Denman or its representative will, at its option, either (i) repair it or (ii) make a reasonable allowance on the purchase of a new tire of the prevailing available comparable model, provided your warranty claim is properly submitted. If the tire is replaced, the charge for the replacement tire will be equal to the percentage the tire tread design is worn times the Denman dealers current price for the replacement tire, net, plus applicable Federal, state and local taxes. For example, if the tire proves to be adjustable when the tire tread design is worn 25 percent, the charge for the replacement tire will be equal to 25 percent of the current price of the replacement tire, net, plus applicable taxes. The percentage the tire tread design is worn will be determined by taking the average of three measurements around the tire tread at the fastest wearing groove and pro-rating according to the molded depth measurement of the same groove.

B. Limitations on Warranty Coverage:

1). The owner, and not Denman, shall be liable for and pay for (i) all field charges for labor and other expenses incurred in the replacement of the tire and (ii) any expense incurred by the owner in order to remedy any defect in the tire. Such charges may include, but are not necessarily limited to: (a) all taxes imposed upon the sale of replacement tires and (b) all charges for demounting the replaced tire and mounting and balancing the replacement tire.

2). This warranty does not cover damage to the tire resulting from cuts, punctures, impact breaks or other road hazards, improper inflation, improper mounting, improper repair, wheel misalignment, filled tires, tire/wheel assembly imbalance, collision, accident, fire, misuse, abuse, non use, vandalism, damage in shipment (fork lift cuts), non conforming rims, racing, overloading, improper balancing, run flat, added material, vehicle projection rubbing, spinning, antique tire whitewall discoloration after 36 months from date of manufacture, or other causes beyond Denman control. This warranty also does not cover intentional alterations to the tire itself, including, but not limited to added siping, tread cutting or insert devices. Alterations such as this do increase the possibility of sudden tire failure which can result in serious injury or death. Do not make alterations to the tire itself. This tire was manufactured to comply with Federal standards. Alterations to the tire are dangerous.

3). Tires returned for balance or out of round complaints will only be honored if the tire is within the first 10% of tread wear.

4). Tires branded "Blemish" have the same coverage as first line tires except no credit will be given for appearance or cosmetic conditions.

5). Racing tires (front and rear) are adjustable only for reasons of product integrity. Non adjustable conditions include incorrect durometer, rapid tread wear, weather check and not enough smoke.

C. To Submit a Warranty Claim:

- 1). If you have a warranty claim, return the tire to the Denman dealer who sold you the tire covered by this warranty.
- 2). If you are unable to return to the dealer who sold you the tire, return it to any Denman dealer.
- 3). If you need assistance in locating a Denman dealer, contact our Customer Service Department, at the phone number listed below, and someone from that department will advise you of a Denman dealer in your area who can handle your warranty claim.
- 4). When returning a tire to the factory, you must obtain a return authorization number (RGA) from our customer service department.
- 5). The following must be submitted as part of a claim:
 - a). Serial code
 - b). Size
 - c). Brand name
 - d). Dealer and customer name
 - e). Return authorization number
 - f). Tread remaining
 - g). Reason for return

D. Exclusions

THE REMEDY SET FORTH HEREIN SHALL BE THE EXCLUSIVE REMEDY AVAILABLE TO ANY USER OF THE TIRE(S) AND DENMAN NEITHER ASSUMES NOR AUTHORIZES ANY REPRESENTATIVE OR OTHER PERSON TO ASSUME FOR IT ANY OBLIGATION OR LIABILITY OTHER THAN AS EXPRESSLY SET FORTH HEREIN. DENMAN SHALL NOT BE LIABLE FOR ANY INCIDENTAL OR CONSEQUENTIAL DAMAGES OR EXPENSES ARISING DIRECTLY OR INDIRECTLY FROM ANY DEFECT IN THE TIRE(S) OR FROM THE USE THEREOF.

Note:

- 1). Some states, provinces or territories do not allow the exclusion or limitation of incidental or consequential damages, so the above limitation or exclusion may not apply to you. This warranty gives you specific legal rights, and you may also have other rights which vary from jurisdiction to jurisdiction.
- 2). Any tire, no matter how well constructed, may fail or otherwise become unserviceable due to conditions beyond the control of the manufacturer. Nothing in this limited warranty is intended to be a representation by Denman that tire failures cannot occur, or that the failure of a tire is indicative of a defect in material or workmanship.



400 Diehl South Road, Leavittsburg, Ohio 44430
1-800-334-5543 330-675-4242 fax 330-675-4222
www.denmantire.com sales@denmantire.com

Tire Return Procedure

1. Warranty Adjustment:

COMPLETED RETURN GOODS AUTHORIZATION FORM IS REQUIRED TO OBTAIN AN RGA NUMBER- NO ADJUSTMENT CREDIT WILL BE ISSUED WITHOUT THIS REFERENCE NUMBER.

OHIO & MEXICO PRODUCED ADJUSTMENT PROCEDURE:

- A.** Complete Return Goods Authorization Form
- B.** Send Information to Customer Service via fax at 330-675-4222 or email at sales@denmantire.com

CHINA & INDIA PRODUCED ADJUSTMENT PROCEDURE:

- A.** Complete Return Goods Authorization Form
- B.** Take Digital Photos of:
 - Entire Sidewall
 - Close up of Serial Number
 - Reason for Return/Fault Area
(photo of tread pattern must be identifiable)
 - Inside Tire at Fault Area
- C.** Send Information to Customer Service via fax at 330-675-4222 or email at sales@denmantire.com

NO ADJUSTMENT TIRES ARE TO BE SENT BACK TO DENMAN FACTORY WITHOUT PRIOR AUTHORIZATION

NO ADJUSTMENT TIRES ARE TO BE SCRAPPED WITHOUT PRIOR AUTHORIZATION

Any freight charges incurred or billed to Denman for tires returned in error will be the responsibility of the customer. All charges will be billed back to the customer or deducted from any credit due.

PRE-AUTHORIZED SHIPMENTS CAN BE SENT TO:

DENMAN TIRE CORPORATION
400 DIEHL SOUTH ROAD
LEAVITTSBURG, OHIO 44430-9741
ATTN: ADJUSTMENT DEPARTMENT

WARRANTY LIMITATIONS

Workmanship and material only-per Denman's Limited Warranty Program.

- Private Brands-Check with supplier for limitations
- All Brands-Within the first 10 percent of tread wear for balance/out of round conditions.

2. New Tires (Stock Adjustment)

- A.** An RGA# (Return Goods Authorization) number must be obtained from Denman Customer Service.

This number must appear on the tires(s) bill of lading and Adjustment Inspection Report when sending tires back.

B. FREIGHT CHARGES ARE TO BE PREPAID.

DENMAN TIRE CORPORATION
400 DIEHL SOUTH ROAD
LEAVITTSBURG, OHIO 44430-9741
ATTN: ADJUSTMENT DEPARTMENT

- C.** YOU MUST COMPLETE THE DENMAN RETURN GOODS REPORT. PLEASE MAKE SURE THIS PAPERWORK IS ATTACHED TO ONE OF THE TIRES WHEN THEY ARE SENT BACK.

- D.** All new returns subject to a 10% restocking fee.

- E.** Only tires manufactured by and/or distributed by Denman Tire Corporation and tires in resellable condition in appearance will be credited.

Credit will not be issued for tires that have been previously mounted.

- F.** Tires beyond three years old are not returnable.

3. Shipping Discrepancies

ALL SHIPPING DISCREPANCIES MUST BE SUBMITTED IN WRITING TO & RECEIVED IN OUR CUSTOMER SERVICE DEPARTMENT WITHIN 30 DAYS OF INVOICE DATE.

The following information is required to process any credit / rebills:

- A signed BOL noting any discrepancy
- A copy of the packing list also noting any discrepancy
- Contact person and phone number

Send information to Customer Service via fax at 330-675-4222 or email sales@denmantire.com



DENMAN TIRE CORPORATION RETURN GOODS AUTHORIZATION FORM

DATE: _____ DENMAN RGA#: _____
 RETURN FORM VIA FAX# 330-675-4222 OR EMAIL TO: sales@denmantire.com CUSTOMER CONTROL NUMBER _____

DENMAN USE ONLY:

RETURN CUT DOT NUMBERS ONLY:

SEND TO:

DENMAN TIRE CORPORATION
 400 DIEHL SOUTH ROAD
 LEAVITTSBURG, OHIO 44430
 ATTN: ADJUSTMENT DEPARTMENT
 REF: RGA# - LISTED ABOVE

DENMAN USE ONLY:

RETURN ENTIRE TIRE:

SEND TO:

DENMAN TIRE CORPORATION
 400 DIEHL SOUTH ROAD
 LEAVITTSBURG, OHIO 44430
 ATTN: ADJUSTMENT DEPARTMENT
 REF: RGA# - LISTED ABOVE

(A COPY OF THIS FORM MUST BE INCLUDED WITH THE DOT#S FOR CREDIT) (COMPLETE RETURN INSTRUCTIONS TO FOLLOW)

CUSTOMER INFORMATION:

STORE NAME: _____ CONTACT PERSON: _____

ADDRESS: _____ CITY: _____ STATE: _____

PHONE#: _____ FAX#: _____ EMAIL ADDRESS: _____ ZIP: _____

NO	CODE	SIZE	BRAND	S	E	R	I	A	L	N	O	32NDS	REASON FOR RETURNING	ORIGINAL PURCHASE DATE	INTERNAL USE COMMENTS
1															
2															
3															
4															
5															
6															
7															
8															
9															
10															

ADDITIONAL RETURN INSTRUCTIONS: _____

REF. NO. F-SAL-16 DATE OF ISSUE: 12/4/07

AUTHORIZED BY: C.S. MANAGER



SKID STEER WARRANTY RESPONSE SHEET

DATE _____

CUSTOMER CONTROL# _____

DENMAN RGA# _____

Return Form Via: Fax No. 330-675-4222 or email to sales@denmantire.com

SKID STEER TIRES INCLUDED IN THE HOUR WARRANTY

1500 HOUR WARRANTY

RSK-40R Premium Radial Skid Trax 1500 Hour

RSK-50R Premium Radial Skid Trax 1500 Hour

1000 HOUR WARRANTY

SKD-30 Premium Skid Trax 1000 Hour

SKD-32 Premium Skid Trax 1000 Hour

600 HOUR WARRANTY

SKD-15 Skid Steer Plus 600 Hour

SKD-16 Skid Steer Plus 600 Hour

(Hours of Service Guarantee ONLY provided on 10-16.5 and 12-16.5 sizes above)

INFORMATION NEEDED TO PROCESS CLAIM

- 1) COMPLETED RGA FORM
- 2) ENTIRE SERIAL# CUTOUT (Incomplete serial #s will be rejected – no credit)
- 3) DIGITAL PHOTOS (Email to sales@denmantire.com) – REF: RGA#
- 4) PROOF OF PURCHASE (Copy of Original Denman Invoice or Ship Date)
- 5) DOCUMENTATION OF SERVICE HOURS:
 - a) Reading when tires were installed
 - b) Reading when tires were removed
 - c) Current Tread Depth

RETURN ALL INFORMATION TO: DENMAN TIRE CORPORATION – ATTN: ADJUSTMENT DEPARTMENT
 400 DIEHL SOUTH ROAD
 LEAVITTSBURG, OHIO 44430

CUSTOMER INFORMATION

STORE NAME _____

CONTACT NAME _____

ADDRESS _____

CITY _____

STATE _____

ZIP _____

PHONE NO. _____ FAX NO. _____

EMAIL ADDRESS _____

NO.	CODE	SIZE	BRAND	SERIAL NO.	32 nds	BEGINNING HOUR METER READING	ENDING HOUR METER READING	HOURS USED
1								
2								
3								
4								
5								
6								
7								
8								
9								
10								

* Adjustment credit issued on a pro-rated basis only on tires that fall within the specified warranty guidelines.
 ** Warranty adjustments limited to defects in materials and workmanship for 60 months from the date of manufacture.

A M E R I C A W O R K S O N D E N M A N



400 Diehl South Road, Leavittsburg, Ohio 44430

1-800-334-5543 330-675-4242 fax 330-675-4222 www.denmantire.com sales@denmantire.com